

KEY FACTS

LOCATION:

Piscataway, NJ

SQUARE FEET:

12,000

COMPLETED:

2009

SERVICES:

Structural and MEP/FP Engineering

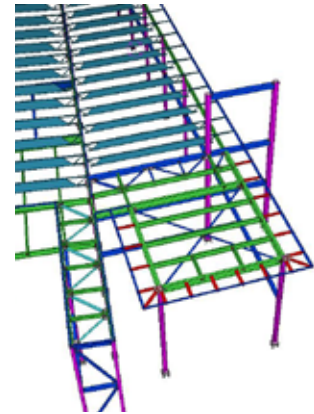
ARCHITECT:

The Biber Partnership

HIGHLIGHTS:

2011 Honorable Mention Award for
Design Excellence, AIA Philadelphia

Designed to LEED Silver Standards



RUTGERS UNIVERSITY

The new Visitor Welcome Center for Rutgers University will host over 45,000 perspective students to the University each year and over 170,000 visitors. The new two-story building contains exhibition space, meeting/banquet facilities and office space. Designed to LEED Silver standards, the building features exterior sun screening devices, energy efficient systems, low water use plumbing fixtures and materials with high recycled content.

This was a fast-track project requiring innovative structural framing solutions. The two-story steel structure incorporates sloped roof joist framing over the large meeting spaces and entry lobby, to reduce interior structure. Braced frames and horizontal bracing within in the structure allowed for lighter framing and shallower sections which appealed to the architect and remained visually exposed in the final product. The second floor framing cantilevers on three sides to enlarge the exhibition and gallery space while supporting a two-story glass façade overlooking the campus.

The new facility includes an entry lobby, great room, break room, warming kitchen, storage room, meeting rooms, and administration areas. The lobby features a 42-foot-long by 8-foot-high "Scarlet Wall" visible from the street that offers a photographic and chronological introduction to the university. The building also features a super-sized block "R" on a towering red exterior wall, clearly visible from many points on the Busch Campus.

FOR MORE INFORMATION,
PLEASE CONTACT:

Scott D. Holsinger, PE
Director Structural Engineering
sdh@bala.com

BALA CONSULTING ENGINEERS, INC.
443 SOUTH GULPH ROAD
KING OF PRUSSIA, PA 19406

610 649 8000
610 649 8475 FAX
WWW.BALA.COM